



# BNP Monoclonal Antibody

<b>Catalog No</b>	YP-Ab-15825
<b>Isotype</b>	IgG
<b>Reactivity</b>	Human
<b>Applications</b>	IHC;IF;ELISA
<b>Gene Name</b>	NPPB
<b>Protein Name</b>	Natriuretic peptides B
<b>Immunogen</b>	Synthetic peptide corresponding to aa (Cys-Phe-Gly-Arg-Lys-Met-Asp-Arg-Ile-Ser-Ser-Ser-Ser) of human BNP, conjugated to KLH.
<b>Specificity</b>	BNP Monoclonal Antibody detects endogenous levels of BNP protein.
<b>Formulation</b>	Ascitic fluid containing 0.03% sodium azide,0.5% BSA, 50%glycerol.
<b>Source</b>	Monoclonal, Mouse
<b>Purification</b>	Affinity purification
<b>Dilution</b>	IHC: 1/200 - 1/1000. ELISA: 1/10000.. IF 1:50-200
<b>Concentration</b>	1 mg/ml
<b>Purity</b>	≥90%
<b>Storage Stability</b>	-20°C/1 year
<b>Synonyms</b>	NPPB; Natriuretic peptides B; Gamma-brain natriuretic peptide
<b>Observed Band</b>	
<b>Cell Pathway</b>	[NT-proBNP]: Secreted . Detected in blood. .; [proBNP(3-108)]: Secreted . Detected in blood. .; [Brain natriuretic peptide 32]: Secreted . Detected in blood. .; [BNP(3-32)]: Secreted . Detected in blood. .
<b>Tissue Specificity</b>	[Brain natriuretic peptide 32]: Detected in the cardiac atria (at protein level) (PubMed:2138890, PubMed:2136732). Detected in the kidney distal tubular cells (at protein level) (PubMed:9794555).
<b>Function</b>	function:Acts as a cardiac hormone with a variety of biological actions including natriuresis, diuresis, vasorelaxation, and inhibition of renin and aldosterone secretion. It is thought to play a key role in cardiovascular homeostasis. Helps restore the body's salt and water balance. Improves heart function.,online information:Brain natriuretic peptide entry,pharmaceutical:Available under the name Nesiritide (Scios). Used for the treatment of heart failure.,similarity:Belongs to the natriuretic peptide family.,subunit:Interacts with NPR3.,tissue specificity:Brain and also in atria, but at much lower levels than ANP.,
<b>Background</b>	This gene is a member of the natriuretic peptide family and encodes a secreted protein which functions as a cardiac hormone. The protein undergoes two cleavage events, one within the cell and a second after secretion into the blood. The protein's biological actions include natriuresis, diuresis, vasorelaxation,



inhibition of renin and aldosterone secretion, and a key role in cardiovascular homeostasis. A high concentration of this protein in the bloodstream is indicative of heart failure. The protein also acts as an antimicrobial peptide with antibacterial and antifungal activity. Mutations in this gene have been associated with postmenopausal osteoporosis. [provided by RefSeq, Nov 2014],

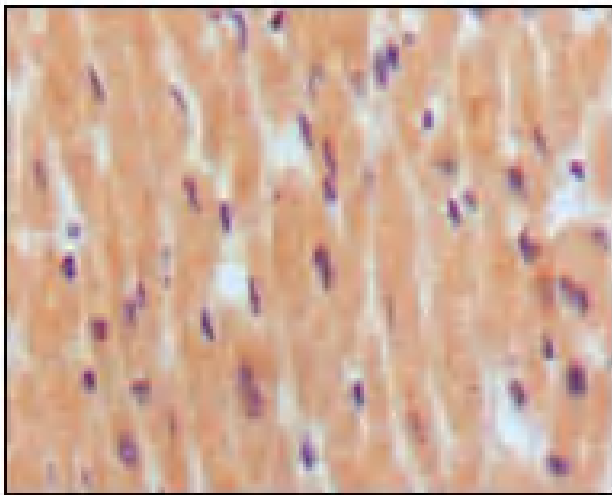
**matters needing attention**

Avoid repeated freezing and thawing!

**Usage suggestions**

This product can be used in immunological reaction related experiments. For more information, please consult technical personnel.

## Products Images



Immunohistochemistry analysis of paraffin-embedded human normal myocardium, showing cytoplasmic localization with DAB staining using BNP Monoclonal Antibody.